

Rhapsodic Ignition

for Roger Allen Cope

Karen P. Thomas

$\text{♩} = 48$ freely

1 *p* VII XII

5 *Sva* *rit.* *gl.* *mp* V XII X

10 XII VIII V *gl.* *gl.* II

14 *accel.* *rit.* V VI *gl.* XIV XII

18 *sim. (gl.)* V

21 VI *rit.* *gl.*

24 XII V

28 accel. rit.

30 VIII V molto accel. II = 120

34 rit. = 60 sim. (gl.) molto accel. = 120

38 accel. III V VII

42 I = 140 V 3

45

49 *V* *VIII* *accel.* *X*
cresc.

52 *XII* *VI* *accel.* *rit.* *8va*
f *gl.* $\bullet = 140$

56 *8va* *rit.* *rit.* *X*
 $\bullet = 90$ $\bullet = 60$ *gl.*
dim. *mp*

61 *XII* *VIII* *V* *II*
gl. *gl.*

65 *V* *accel.* *V* *rit.* *VI* *gl.* *XIV*
 $\bullet = 140$ *XII*

69 *V* *sim. (gl.)*
3

72 *accel.*

76 *molto accel.* *rit.* *molto rit.*

cresc. poco a poco

82 $\text{♩} = 48$

mf

87 *rit.* *A Tempo* *sul tasto*

mp

92 *gl.* XII *gl.* VII

97 *cresc.* *mf*

101 *accel. poco a poco*

104 *dim.*

$\text{♩} = 69$ *melody = notes with downward stems*

107 *mp*

110

113

116 *gl.* II XII

119 XII *accel.* X IX XIII IX *rit.*
cresc. poco a poco

123 III II *accel.* III V VII
mf

126 I $\text{♩} = 140$ V 3

129

133

gl. V VIII *accel.* X

136

XII $\text{♩} = 90$ *sul pont.* V *golpé*

f

141

sim. V *golpé*

145

149

153

mf

158

cresc. *f* *dim.*

162

mf

166

cresc. *f*

170

rasgado rit. *A Tempo*

175

golpé

180

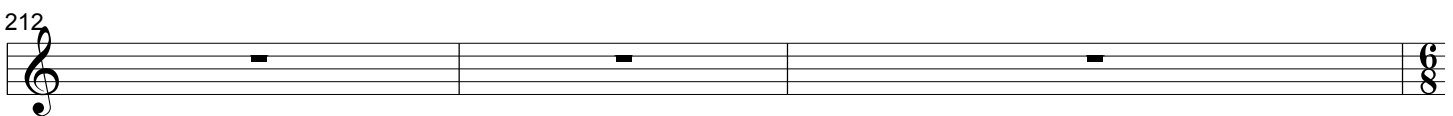
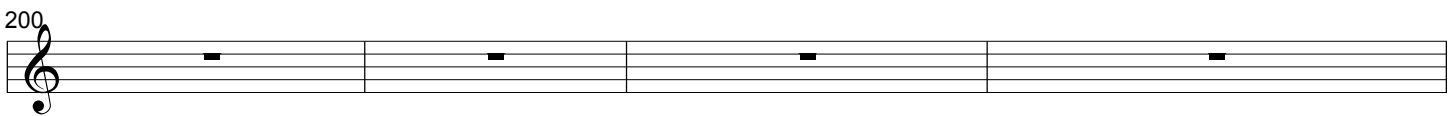
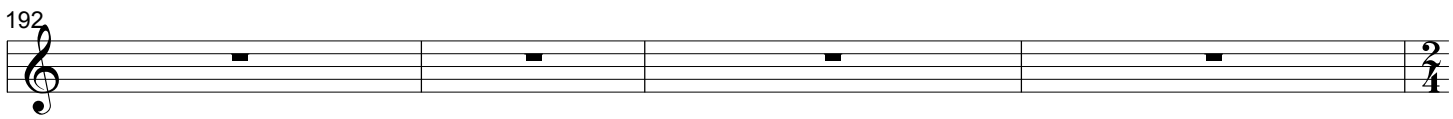
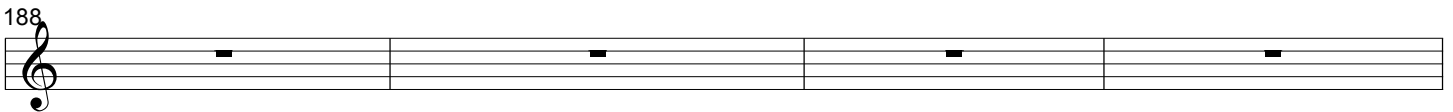
V

184

V

This page left blank for security.

Thanks for your understanding.



♩ = 90

III

rake damped strings

VI

218

golpé

221

0 0

0 0

0 0

0

0 0 0

0 0 0

4 3

4 3

4 3

4 3

4 5

4 5

224

vib.

R.H. harmonics

♩ = 60

3

3

rit.

4

5

♩ = 90

227

III

5

3

cresc.

230

5

5

5

5

ff

232

accel.

5

5

5

5

cresc.

rasgado

fff